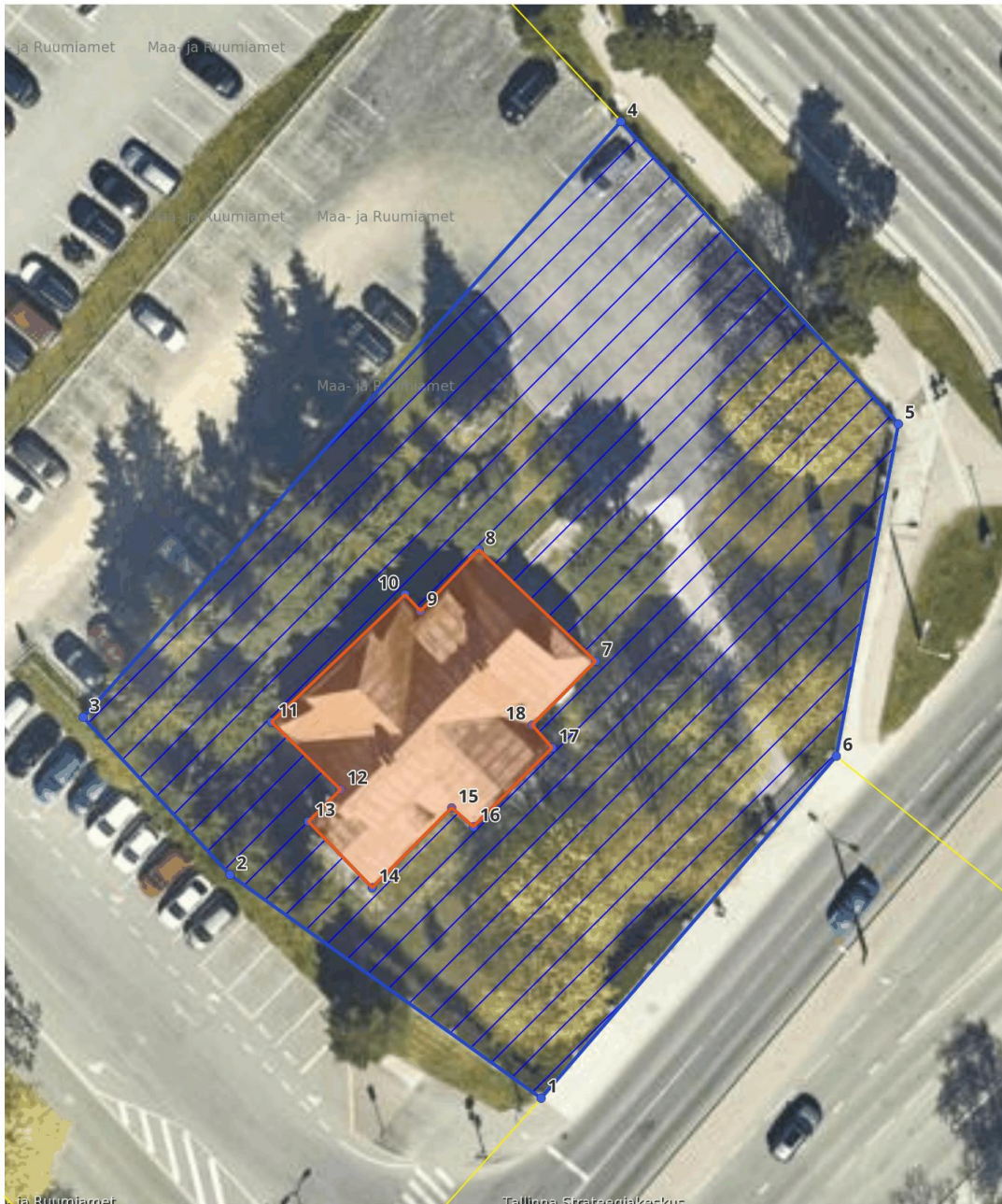
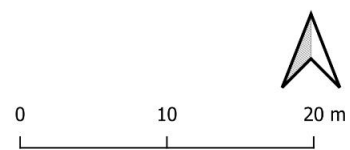


## 2. Burmani villa. Kaitsevööndi piir.



- Kaitsevööndi nurgapunkt
- Burmani villa
- ▨ Kaitsevöönd
- ▭ KÜ 2026



Muinsuskaitseamet: 04.05.2026  
Aluskaart: Maa- ja Ruumiamet 2026

Tabel 2. Mälestise kaitsevööndi nurgapunktide koordinaadid

| Nr | X           | Y          |
|----|-------------|------------|
| 1  | 6586017,624 | 537678,143 |
| 2  | 6586033,926 | 537655,443 |
| 3  | 6586045,422 | 537644,723 |
| 4  | 6586088,894 | 537683,966 |
| 5  | 6586066,827 | 537704,206 |
| 6  | 6586042,582 | 537699,677 |
| 7  | 6586049,512 | 537682,116 |
| 8  | 6586057,655 | 537673,601 |
| 9  | 6586053,184 | 537669,342 |
| 10 | 6586054,381 | 537668,216 |
| 11 | 6586045,082 | 537658,469 |
| 12 | 6586040,148 | 537663,504 |
| 13 | 6586037,815 | 537661,154 |
| 14 | 6586032,979 | 537665,822 |
| 15 | 6586038,805 | 537671,618 |
| 16 | 6586037,429 | 537673,196 |
| 17 | 6586043,202 | 537678,952 |
| 18 | 6586044,859 | 537677,491 |